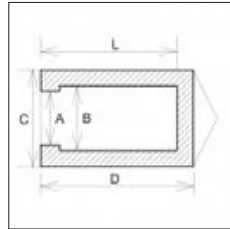


MASKING FOR AXLE

MASKING AND COVERING PRODUCTS FOR INDUSTRIAL SURFACE TREATMENT

PAINTING, POWDER COATING, GALVANIZING, ANODIZING, ETC.

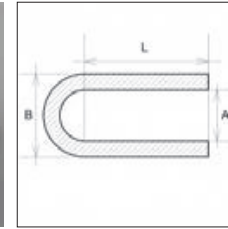
- ▶ Wide range of masking caps and tubing
- ▶ Re-usability
- ▶ Most products in stock
- ▶ No minimum order
- ▶ Masking products make to order



RIBBED CAPS

- Suitable for covering external threads, oins, through and blind holes, etc.
- Very good tightness of the inlet

MADE IN EU
SILICONE - PREMIUM
 3 hrs up to 300 °C
 30 min up to 320 °C
 10 min up to 350 °C



CAPS

- Suitable for covering external threads, pins, through and blind holes, etc.

MADE IN CHINA
SILICONE - STANDARD
 long-term application up to 210 °C
 short-term application up to 315 °C

PRODUCT	A (mm)	B (mm)	C (mm)	D (mm)	L (mm)	PRODUCT	A (mm)	B (mm)	C (mm)	D (mm)	L (mm)	PRODUCT	A (mm)	B (mm)	C (mm)	D (mm)	L (mm)
B-0910-0001-00	5.5	5.8	9.0	33.0	29.0	B-0494-0005-00	15.5	16.3	22.0	33.0	25.0	B-1073-0001-00	29.0	31.0	38.0	165.0	153
B-0910-0000-00	5.5	5.8	9.0	33.0	30.0	B-0494-0002-00	15.5	16.3	22.0	33.0	30.0	B-1278-0001-00	29.5	30.5	35.0	133.0	130
B-1042-0000-00	5.6	6.0	9.0	12.0	7.0	B-0822-0000-00	15.5	16.3	22.0	33.0	30.0	B-0789-0000-00	30.0	31.0	37.0	63.0	60.0
B-1015-0001-00	6.3	8.0	11.0	29.0	28.0	B-0799-0002-00	15.5	16.3	23.0	39.0	36.5	B-1035-0001-00	30.8	36.2	44.0	43.0	39.2
B-0552-0000-00	7.4	7.8	10.0	41.0	40.0	B-0609-0000-00	16.8	18.0	26.5	80.0	75.0	B-0930-0000-00	32.0	33.0	42.0	80.0	75.0
B-0330-0000-00	7.4	7.9	9.8	27.5	25.0	B-1158-0001-00	17.5	18.5	22.0	43.0	40.5	B-1011-0009-00	32.0	40.0	48.0	175.0	170
B-0552-0001-00	7.5	8.0	10.0	41.0	32.0	B-1868-0000-00	17.5	18.5	22.0	52.0	48.5	B-1006-0000-00	32.5	33.0	38.0	20.0	15.0
B-1015-0002-00	7.5	8.0	11.0	29.0	20.0	B-0494-0006-00	17.6	18.3	22.0	33.0	27.0	B-1885-0000-00	33.0	35.5	43.0	164.0	160
B-1405-0000-00	7.5	8.0	11.0	29.0	23.0	B-0711-0002-00	18.5	20.0	29.0	95.0	90.0	B-0920-0006-00	34.0	35.0	43.0	25.0	20.0
B-1015-0000-00	7.5	8.0	11.0	29.0	27.0	B-0925-0002-00	19.0	21.0	29.0	125.0	120	B-2130-0000-00	34.5	35.5	43.0	155.0	150
B-1456-0000-00	7.5	8.0	13.0	75.0	70.0	B-0926-0002-00	19.8	21.5	28.5	133.0	130	B-0633-0002-00	34.5	35.5	48.0	104.5	100
B-1015-0003-00	7.6	9.0	11.0	29.0	28.0	B-0926-0000-00	19.8	21.6	27.9	60.0	55.0	B-0920-0000-00	34.8	36.0	43.0	84.0	80.0
B-0717-0002-00	8.5	9.8	13.8	27.0	18.5	B-0925-0000-00	20.0	21.0	29.0	125.0	120	B-2131-0000-00	35.0	37.0	45.0	230.0	225
B-0717-0001-00	8.5	9.8	13.8	27.0	25.0	B-1161-0001-00	21.5	23.0	31.0	124.0	120	B-1011-0001-00	36.0	40.0	48.0	194.0	190
B-0869-0001-00	9.5	10.0	13.0	21.5	20.0	B-1025-0000-00	22.0	23.5	31.0	104.0	100	B-0633-0000-00	38.0	38.5	48.0	104.5	100
B-1003-0001-00	9.5	10.0	13.5	30.5	20.0	B-1069-0000-00	24.0	25.0	34.0	80.0	75.0	B-1011-0000-00	38.0	40.0	48.0	175.0	170
B-1003-0000-00	9.5	10.0	13.5	33.5	30.0	B-0762-0000-00	24.0	25.0	34.0	90.0	85.0	B-0931-0000-00	38.0	40.0	48.0	205.0	200
B-0717-0003-00	9.5	10.0	13.8	27.0	23.0	B-1070-0000-00	24.0	25.0	34.0	165.0	160	B-1011-0010-00	38.0	40.0	48.0	205.0	200
B-0717-0000-00	9.5	10.0	13.8	27.0	25.0	B-1161-0000-00	24.5	25.0	31.0	123.0	121	B-2009-0000-00	40.5	42.0	46.0	120.0	116
B-1221-0000-00	9.5	10.0	14.7	43.0	40.0	B-1813-0000-00	24.5	25.3	37.0	100.0	90.0	B-1026-0000-00	43.0	44.0	52.0	123.5	120
B-1946-0000-00	9.5	10.3	13.3	48.0	45.0	B-0752-0000-00	25.0	26.0	34.0	55.0	50.0	B-1027-0000-00	44.0	49.0	59.0	170.0	165
B-1869-0000-00	9.7	10.5	15.0	44.0	41.5	B-1025-0002-00	25.5	26.5	31.0	103.5	90.0	B-0934-0000-00	45.5	47.0	56.0	104.0	100
B-1055-0001-00	10.0	10.6	14.0	34.0	30.0	B-0927-0000-00	27.0	28.0	36.0	164.0	160	B-0933-0000-00	46.0	47.0	56.0	175.0	170
B-1106-0000-00	10.7	12.1	15.0	52.2	50.0	B-1278-0003-00	27.0	28.2	35.0	80.0	75.0	B-1027-0001-00	48.0	49.0	59.0	140.0	135
B-1055-0002-00	11.5	12.0	14.8	33.0	30.0	B-0762-0001-00	27.0	28.5	34.0	90.0	81.0	B-1027-0000-00	48.0	49.0	59.0	170.0	165
B-1055-0003-00	11.5	12.0	14.8	43.0	30.0	B-0925-0000-00	27.0	29.5	33.5	22.5	20.7	B-1027-0004-00	48.0	51.0	59.0	85.0	81.0
B-1214-0000-00	11.5	12.0	15.0	62.0	55.0	B-1814-0000-00	27.5	27.9	37.0	100.0	90.0	B-1764-0001-00	53.5	55.0	58.0	44.0	41.0
B-1204-0000-00	11.5	12.0	15.0	62.0	60.0	B-1072-0000-00	27.5	29.0	37.0	113.0	110	B-0601-0000-00	59.5	62.0	71.0	192.0	188
B-1703-0000-00	13.3	14.3	17.0	32.0	30.0	B-1071-0000-00	28.0	29.0	38.0	80.0	74.2	B-0936-0000-00	60.0	61.0	70.0	105.0	100
B-0494-0008-00	13.8	14.0	22.0	33.0	30.0	B-1010-0000-00	28.0	30.0	38.0	175.0	170	B-1028-0000-00	60.0	62.5	71.0	125.0	120
B-1391-0000-00	14.7	15.5	20.0	60.0	53.0	B-1011-0006-00	28.0	36.0	48.0	174.0	170	B-1654-0000-00	65.0	72.0	80.0	172.0	168
B-0494-0004-00	15.0	16.3	22.0	33.0	30.0	B-1261-0000-00	29.0	29.5	34.0	48.0	45.0	B-1095-0000-00	74.3	76.3	81.0	23.0	20.0
B-1277-0000-00	15.3	16.1	21.7	63.4	60.0	B-0789-0001-00	29.0	31.0	37.0	53.0	49.0	B-1472-0001-00	132.7	134.0	165.0	30.0	25.0
B-0494-0007-00	15.4	16.1	22.0	33.0	23.0	B-0789-0002-00	29.0	31.0	37.0	63.0	60.0						

PRODUCT	THREAD	A (mm)	B (mm)	L (mm)
SC-70-1000	M2	1,78	4,08	25,40
SC-80-750		2,03	5,08	19,05
SC-100-500	M3	2,54	5,13	12,70
SC-100-750	M3	2,54	5,13	19,05
SC-100-1000	M3	2,54	5,13	25,40
SC-109-500		2,77	5,82	12,70
SC-109-750		2,77	5,36	19,05
SC-109-1000		2,77	5,36	25,40
SC-125-500		3,18	5,77	12,70
SC-125-1000		3,18	5,77	25,40
SC-148-500	M4	3,76	6,81	12,70
SC-148-750	M4	3,76	3,85	19,05
SC-148-1000	M4	3,76	6,81	25,40
SC-148-1500	M4	3,76	6,81	38,10
SC-156-1000		3,96	7,01	25,40
SC-156-1250		3,96	7,01	31,75
SC-180-1000		4,57	7,62	25,40
SC-187-500	M5	4,75	7,80	12,70
SC-187-610	M5	4,75	7,80	15,49
SC-187-750	M5	4,75	7,80	19,05
SC-187-1000	M5	4,75	7,80	25,40
SC-187-1500	M5	4,75	7,80	38,10
SC-197-1000		5,00	8,05	25,40
SC-218-1000		5,54	8,59	25,40
SC-223-500	M6	5,66	8,71	12,70
SC-223-750	M6	5,66	8,71	19,05
SC-223-1000	M6	5,66	8,71	25,40
SC-223-1500	M6	5,66	8,71	38,10
SC-234-500		5,94	8,99	12,70
SC-234-1000		5,94	8,99	25,40
SC-234-1500		5,94	8,99	38,10
SC-295-500	M8	7,49	10,54	12,70
SC-295-750	M8	7,49	10,54	19,05

PRODUCT	THREAD	A (mm)	B (mm)	L (mm)
SC-295-1000	M8	7,49	10,54	25,40
SC-295-1500	M8	7,49	10,54	38,10
SC-295-2350	M8	7,49	10,54	59,69
SC-312-1500		7,92	10,97	38,10
SC-340-1000		8,64	11,68	25,40
SC-355-1500		9,02	12,07	38,10
SC-366-1500		9,30	12,34	38,10
SC-375-500	M10	9,53	12,57	12,70
SC-375-750	M10	9,53	12,57	19,05
SC-375-1000	M10	9,53	12,57	25,40
SC-375-1500	M10	9,53	12,57	38,10
SC-375-1969	M10	9,53	12,57	50,01
SC-406-1000		10,31	13,36	25,40
SC-456-500	M12	11,58	14,63	12,70
SC-456-750	M12	11,58	14,63	19,05
SC-456-1000	M12	11,58	14,63	25,40
SC-456-1500	M12	11,58	14,63	38,10
SC-468-1000		11,89	14,94	25,40
SC-480-1500		12,19	15,24	38,10
SC-535-750	M14	13,59	16,64	19,05
SC-535-1000	M14	13,59	16,64	25,40
SC-535-1500	M14	13,59	16,64	38,10
SC-535-3000	M14	13,59	16,64	76,20
SC-562-800		14,27	17,32	20,32
SC-625-1500		15,88	18,92	38,10
SC-625-2500		15,88	18,92	63,50
SC-750-2000		19,05	22,10	50,80
SC-845-2844		21,46	24,51	72,24
SC-875-1000		22,23	25,27	25,40
SC-970-1500		24,64	27,69	38,10
SC-970-4000		24,64	27,69	101,60
SC-1062-3414		26,97	30,02	86,72
SC-1250-1500		31,75	34,80	38,10

In case you don't find requested sizes, do not hesitate to contact us.

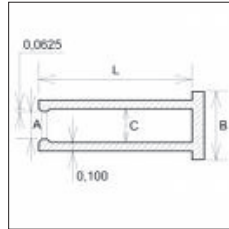
In case you don't find requested sizes, do not hesitate to contact us.

MASKING FOR AXLE

MASKING AND COVERING PRODUCTS FOR INDUSTRIAL SURFACE TREATMENT

PAINTING, POWDER COATING, GALVANIZING, ANODIZING, ETC.

- ▶ Wide range of masking caps and tubing
- ▶ Re-usability
- ▶ Most products in stock
- ▶ No minimum order
- ▶ Masking products make to order



T - CAPS

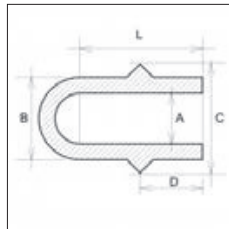
- Suitable for masking pins, threading, etc.
- Very good tightness of the inlet
- Easy application and removal

MADE IN CHINA
SILICONE - STANDARD
 long-term application up to **210°C**
 short-term application up to **315°C**

PRODUCT	A (mm)	B (mm)	C (mm)	L (mm)
SCE-125-2000	3,18	16,51	6,35	50,80
SCE-156-2000	3,96	17,30	7,14	50,80
SCE-180-2000	4,57	17,91	7,75	50,80
SCE-197-1180	5,00	15,80	9,40	37,00
SCE-234-2000	5,94	19,28	9,12	50,80
SCE-294-1330	7,47	20,80	10,64	33,78
SCE-315-1425	8,00	21,34	11,18	36,20
SCE-355-1500	9,02	22,35	12,19	38,10
SCE-375-1421	9,53	22,86	12,70	36,09
SCE-394-1180	10,01	23,34	13,18	29,97
SCE-451-2000	11,46	24,79	14,63	50,80
SCE-485-1600	12,32	26,29	16,12	40,64
SCE-531-1180	13,49	26,82	16,66	29,97

PRODUCT	A (mm)	B (mm)	C (mm)	L (mm)
SCE-587-374	14,91	28,24	18,08	9,50
SCE-608-1180	15,44	28,78	18,62	29,97
SCE-622-1575	15,80	29,13	18,97	40,01
SCE-689-3579	17,50	30,84	20,68	90,91
SCE-725-3120	18,40	28,56	18,40	85,10
SCE-963-3000	24,46	37,80	27,64	76,20
SCE-980-1654	24,90	38,00	26,90	42,00
SCE-1125-5000	28,58	41,91	31,75	127,00
SCE-1288-4128	32,72	46,05	35,89	104,85
SCE-1921-1575	48,79	62,13	51,97	40,01
SCE-2500-2420	63,50	76,84	66,68	61,47
SCE-3000-2920	76,20	89,00	79,38	74,17
SCE-3500-3420	88,90	102,24	92,08	86,87

In case you don't find requested sizes, do not hesitate to contact us.



FLANGED CAPS

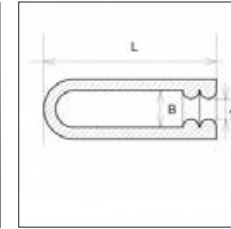
- Suitable for masking threads and holes including leading edge or bevel
- Also to masking external threads, pins, etc.

MADE IN CHINA
SILICONE - STANDARD
 long-term application up to **210°C**
 short-term application up to **315°C**

PRODUCT	A (mm)	B (mm)	C (mm)	D (mm)	L (mm)
CP-M8	4.39	7.39	11.99	11.99	30.99
CP-M10	5.69	8.71	14.71	13.00	32.00
CP-M12	7.65	10.69	15.80	14.00	33.02

PRODUCT	A (mm)	B (mm)	C (mm)	D (mm)	L (mm)
CP-M12L	8.00	10.69	15.80	14.00	45.66
CP-M14	10.69	13.69	18.01	15.01	34.04
CP-M14L	9.55	12.70	17.53	17.02	57.15

In case you don't find requested sizes, do not hesitate to contact us.



FLEX CAPS

- Suitable for masking pins, threading, etc.
- Very good tightness of the inlet

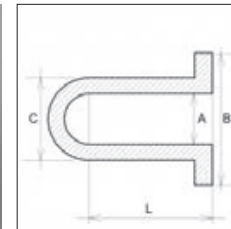
MADE IN CHINA
SILICONE - STANDARD
 long-term application up to **210°C**
 short-term application up to **315°C**

PRODUCT	A (mm)	B (mm)	L (mm)
SRC-3-6	3.00	6.00	39.00
SRC-6-9	6.00	9.00	39.00
SRC-9-12	9.00	12.00	39.00
SRC-12-15	12.00	15.00	39.00
SRC-15-18	15.00	18.00	39.00
SRC-18-21	18.00	21.00	39.00

PRODUCT	A (mm)	B (mm)	L (mm)
SRC-21-24	21.00	24.00	39.00
SRC-24-27	24.00	27.00	39.00
SRC-27-30	27.00	30.00	52.00
SRC-30-33	30.00	33.00	52.00
SRC-33-36	33.00	36.00	52.00
SRC-36-39	36.00	39.00	52.00

PRODUCT	A (mm)	B (mm)	L (mm)
SRC-39-42	39.00	42.00	52.00
SRC-42-45	42.00	45.00	52.00
SRC-45-48	45.00	48.00	52.00
SRC-48-51	48.00	51.00	52.00
SRC-51-54	51.00	54.00	52.00

In case you don't find requested sizes, do not hesitate to contact us.



WASHER CAPS

- Suitable for covering pins including seating, through and blind holes, etc.

MADE IN CHINA
SILICONE - STANDARD
 long-term application up to **210°C**
 short-term application up to **315°C**

PRODUCT	A (mm)	B (mm)	C (mm)	L (mm)
WC-100-500	2.54	12.70	5.72	25.4
WC-125-500	3.18	12.70	6.40	25.4
WC-156-500	3.96	12.70	8.00	25.4
WC-180-600	4.57	15.24	8.00	25.4
WC-223-720	5.66	18.29	8.71	25.4

PRODUCT	A (mm)	B (mm)	C (mm)	L (mm)
WC-240-500	6.10	12.70	9.09	25.4
WC-300-675	7.62	17.15	10.59	25.4
WC-375-825	9.53	20.96	13.00	38.1
WC-615-1180	15.62	29.97	20.70	38.1
WC-780-1475	19.81	37.47	24.69	38.1

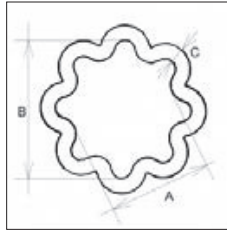
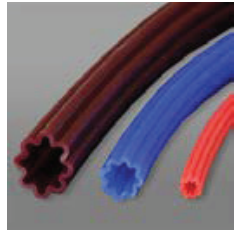
In case you don't find requested sizes, do not hesitate to contact us.

MASKING FOR AXLE

MASKING AND COVERING PRODUCTS FOR INDUSTRIAL SURFACE TREATMENT

PAINTING, POWDER COATING, GALVANIZING, ANODIZING, ETC.

- ▶ Wide range of masking caps and tubing
- ▶ Re-usability
- ▶ Most products in stock
- ▶ No minimum order
- ▶ Masking products make to order



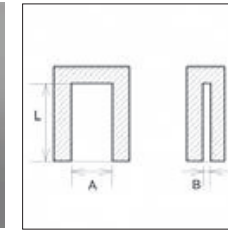
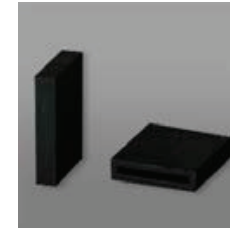
STAR TUBINGS

- Ideal for masking external diameters
- Due to the special shape to minimize friction during application and remove
- Can be used for wide range of diameters
- Available in lengths according to your needs

MADE IN CHINA
SILICONE - STANDARD
 long-term application up to 210°C
 short-term application up to 315°C

PRODUCT	A (mm)	B (mm)	C (mm)	PRODUCT	A (mm)	B (mm)	C (mm)
SST-03/05	2.80	5.30	1.52	SST-09/11	8.50	11.50	1.52
SST-05/07	4.80	7.30	1.52	SST-11/13	10.70	14.00	1.52
SST-07/09	6.50	9.50	1.52	SST-13/17	12.50	18.00	1.52

In case you don't find requested sizes, do not hesitate to contact us.



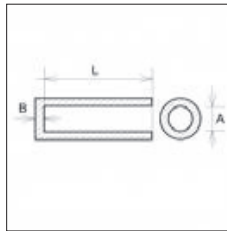
RECTANGULAR CAPS

- Designed to cover the earth and earth strips for connectors

EPDM RUBBER
 long-term application up to 120°C
 short-term application up to 180°C

PRODUCT	A (mm)	B (mm)	L (mm)	PRODUCT	A (mm)	B (mm)	L (mm)
EQ-0157	3.99	0.61	19.99	EQ-0470	11.94	1.02	9.50
EQ-0250	6.35	0.79	10.92	EQ-0490	12.45	1.19	17.45
EQ-0312	7.92	0.64	8.26	EQ-0511	12.98	1.02	50.04
EQ-0460	11.68	0.89	7.11				

In case you don't find requested sizes, do not hesitate to contact us.



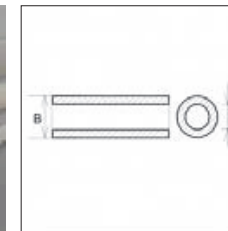
FLAT TOP CAPS

- Suitable for masking external threads, pins, etc.

EPDM RUBBER
 long-term application up to 120°C
 short-term application up to 180°C

PRODUCT	A (mm)	B (mm)	L (mm)	PRODUCT	A (mm)	B (mm)	L (mm)
EFC-70-1000	1.78	1.52	25.40	EFC-456-1120	11.58	1.52	28.45
EFC-100-1120	2.54	1.52	28.45	EFC-480-1500	12.19	1.52	38.10
EFC-120-400	3.05	1.52	10.16	EFC-535-1500	13.59	1.52	38.10
EFC-145-1120	3.68	1.52	28.45	EFC-590-708	14.99	1.52	17.98
EFC-172-800	4.37	1.52	20.32	EFC-640-900	16.26	1.52	22.86
EFC-185-1120	4.70	1.52	28.45	EFC-665-732	16.89	1.52	18.59
EFC-220-1120	5.59	1.52	28.45	EFC-687-330	17.45	1.52	8.38
EFC-234-1500	5.94	1.52	38.10	EFC-728-452	18.49	1.52	11.48
EFC-295-250	7.49	1.52	6.35	EFC-811-728	20.60	1.52	18.49
EFC-300-1120	7.62	1.52	28.45	EFC-921-728	23.39	1.52	18.49
EFC-355-1500	9.02	1.52	38.10	EFC-1000-650	25.40	1.52	16.51
EFC-375-1120	9.53	1.52	28.45	EFC-1575-670	40.01	1.52	17.02
EFC-393-728	9.98	1.52	18.49	EFC-1772-670	45.01	1.52	17.02
EFC-440-728	11.18	1.52	18.49				

In case you don't find requested sizes, do not hesitate to contact us.



TUBINGS

- Suitable for masking external threads, pins, etc.
- Available in lengths according to your needs

MADE IN CHINA
SILICONE - STANDARD
 long-term application up to 210°C
 short-term application up to 315°C

Imperial system			Metric system		Metric system			
PRODUCT	A (mm)	B (mm)	PRODUCT	A(mm)	B(mm)	PRODUCT	A(mm)	B(mm)
ST-0056	1,42	4,60	ST-2,8/4,8	2,80	4,80	ST-7,5/10,5	7,50	10,50
ST-0062	1,57	4,75	ST-03/05	3,00	5,00	ST-08/11	8,00	11,00
ST-0109	2,77	5,94	ST-3,8/5,8	3,80	5,80	ST-09/12	9,00	12,00
ST-0172	4,37	7,54	ST-04/05	4,00	5,00	ST-11/14	11,00	14,00
ST-0203	5,16	8,33	ST-04/07	4,00	7,00	ST-13/16	13,00	16,00
ST-0281	7,14	10,31	ST-4,8/7,2	4,80	7,20	ST-14-18	14,00	18,00
ST-0343	8,71	11,89	ST-05/08	5,00	8,00	ST-15/19	15,00	19,00
ST-0406	10,31	13,49	ST-5,8/8,2	5,80	8,20	ST-18/22	18,00	22,00
ST-1000	25,40	28,58	ST-06/09	6,00	9,00	ST-22/26	22,00	26,00
ST-1125	28,58	31,75	ST-07/10	7,00	10,00	ST-30/34	30,00	34,00
ST-1250	31,75	34,93						

In case you don't find requested sizes, do not hesitate to contact us.